

Part 5: Fact or Opinion (5 points)

*Listen to the sentences from the lecture. If the sentence is a fact, write **F**. If the sentence is an opinion, write **O**.*

1. _____ **O** _____

2. _____ **F** _____

3. _____ **O** _____

4. _____ **F** _____

5. _____ **O** _____

Part 4: Short Answer (15 points)

Use your notes to answer these questions.

1. Write the two causes and the two effects of global warming below.

1. burning fossil fuels

1. more/stronger storms

2. deforestation

2. animal extinction

2. What is global warming?

Earth's climate gets hotter

3. What are fossil fuels? like

natural fuels ^{like} oil, gas

4. What is one example of how humans use fossil fuels?

transportation

5. What is deforestation?

burning / cutting down trees

* 6. What is one cause of deforestation? REVISÉ answer could also be same as #5
used to make paper, furniture

7. Why are trees important for the world?

keep CO₂ levels down

8. How will storms become stronger due to global warming? 1. + 2. for full credit

1. they will be longer and 2. have stronger wind speeds

9. What is one effect of wind speeds increasing during storms?

more buildings damaged

10. How many animals do scientists think will be extinct before 2050? choose 1

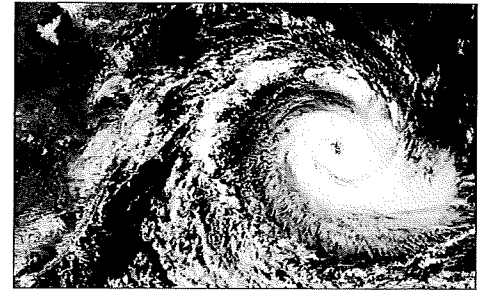
1. 1/3 or 2. in 25% of current animal species

11. Which animal could be extinct in less than 100 years, according to the lecture?

polar bear

ELS 002
Final Exam
Summer 2018

Name: _____
Score: _____ /43 = _____ %



Part 3: Making Predictions (2 points)

In this lecture, you will hear a lecture called "Global Warming: Causes and Effects" What are two things you predict you might learn in this lecture?

1. Any reasonable response

2. Any reasonable response

Part 4: Lecture Notetaking (10 points)

You will hear a lecture about the causes and effects of global warming. Take notes on this page as you listen using key words, abbreviations, and symbols.

global warming = climate hotter → scary effects on animals, ag., humans
 ppl. disagree a/b causes

2 causes

1. burning fossil fuels = oil/gas
 - transit → more cars, etc.
 - more fuel use
 - + fuel use → + CO₂ in air
33% in US
2. deforestation = trees cut/burn humans
 - for paper/furniture
 - for grass for animals we eat
 - for house land
 - why bad? trees ↓ = + CO₂ in air, → global warming

2 effects

1. + / stronger storms
 - will be v. extreme b/c of...
 - longer storms
 - ↑ wind speed ...
 - b/c ocean temp. ↑ & storms get energy from warm water
 - → + damage
2. animal extinction
 - > 1m species by 2050 (1/4 of Earth life)
 - # of species ↑
 - ex. polar bear ~~dead~~ find cool place, maybe x in 100 yrs.

why imp.? = humans try to save Earth.

Part 1: Notetaking Abbreviations and Symbols (5 points)

What do each of the following symbols and abbreviations mean?

| | | | | | |
|----|-----|-----------------------------|-----|------|-----------|
| 1. | ~ | about/ approximately/around | 6. | M | million |
| 2. | yr. | year | 7. | ↓ | decreases |
| 3. | w/ | with | 8. | % | percent |
| 4. | → | leads to /causes /so | 9. | # | number |
| 5. | > | greater/less than | 10. | ppl. | people |

Part 2: Notetaking (6 points)

Listen to your teacher read six sentences. Write the sentences in notetaking form below. Use symbols and abbreviations.

1. # ppl in US is ↑
2. ~ 70 m dogs /cats in US
3. Study → ↑ grades
4. woman books < man books
5. Dinos lived Earth ~~from~~ 65 m yr. ago
6. Herbivores x eat meat